



HORST RELLECKE



HORST RELLECKE
print version homepage
www.horst-rellecke.de
August 2025





GLASS ELEPHANT 1981 - 84

Maximilianpark Hamm / Germany

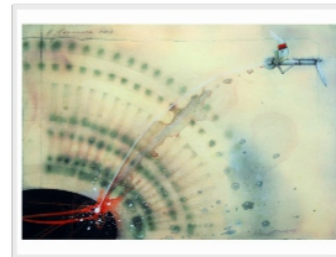
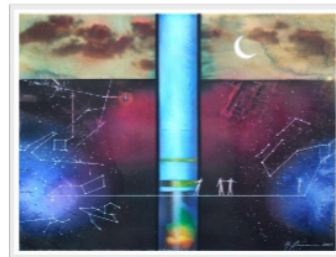
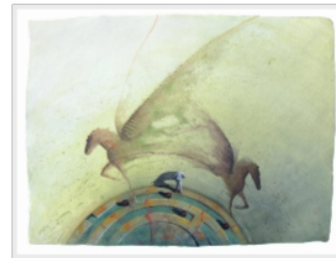
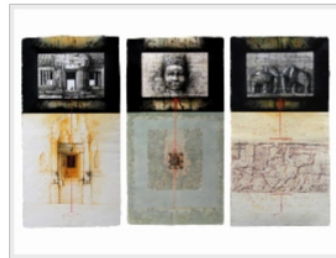
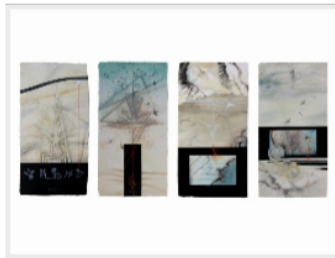
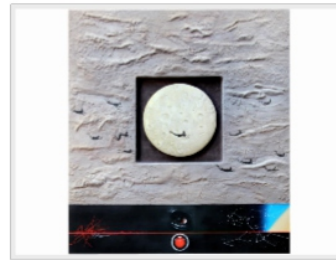
Design: Horst Rellecke

The Glass Elephant, a walk-in sculpture of glass and steel, was designed and built from the ruins of a former coal washing plant to celebrate the first State Garden Fair in North-Rhine-Westphalia. The measurements of the Elephant are 35 meters height, 54 meters length, and with a capacity of 20,000 cbms. The inside of this largest animal figure in the world has been transformed into a greenhouse and also exhibits 10 kinetic Rellecke objects on permanent display. In 2009 the lighting structure of the Glass Elephant was enhanced with new technology. The old fluorescent lamps were replaced with LED modules. The LED's are supposed to generate all colors of the rain-bow with a huge number of variations and to also produce entire light shows. The inauguration of the new installation was on the occasion of the festivities for the 60th birthday of the State North-Rhine-Westphalia with a light and sound show. Premiere of the especially com-posed music "Elephants delight" and delivered by musicians from "Crystal Silence" was further enhanced by façade climbers of "Climbix".

Westfälischer Anzeiger Hamm 27.06.2009:

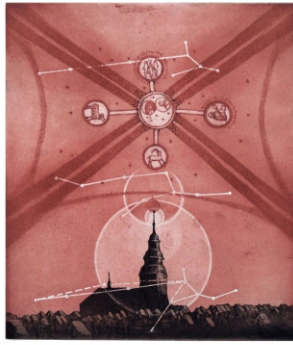
10 000 visitors watched the light spectacle in the Elephant. On the left, above the Elephant's right eye, a man dressed in white stood in the window. From below, only a phantomlike shadow was recognizable. The figure was swaying back and forth, repeating the process. To the delight of the audience, a few fireflies had already started their own show in the night sky around 11:00 pm. Finally – music. The elephant's trunk illuminated in a radiant white glow. Men dressed in white exited from the windows and scaled down on ropes swinging their green lit swords. Spontaneous applause. Now head, ears and trunk of the Glass Elephant change colors to accompany the mystical background music: Orange, yellow, green, red – sometimes slowly and then rapidly. Suddenly the explosion - from the back of the concrete animal rises a display of fireworks into the night sky. In concluding, the Elephant displays the colors of the State of North-Rhine-Westphalia – green, white and red. In the very late evening, approximately 10,000 visitors watched this one-half hour spectacle on the opening of the North-Rhine-Westphalia Fair in the Maxi Park.



[illegible]

3

PRINTS



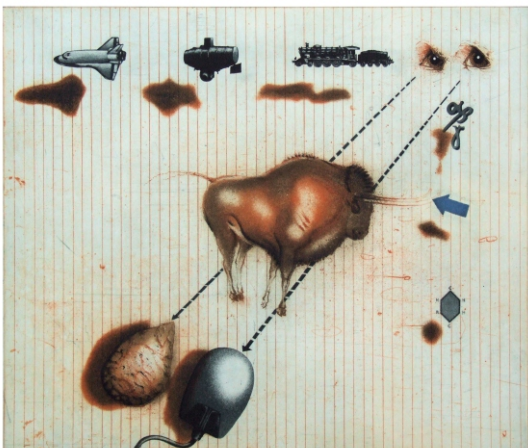
Portfolio:
"The sky is below us"
6 etchings
size of plates 29,8 x 25,6 cm
50 prints



„Yesterday“
etching from 3 plates in 5 colours
size of paper 60 x 80 cm
size of plate 40 x 54 cm
100 prints (10 a.p.)



„Bellibrushing“
etching from 3 plates in 5 colours
size of paper 60 x 80 cm
size of plate 40 x 54 cm
100 prints (10 a.p.)



„From Altamira to Mars“
etching from 2 plates in 4 colours
size of plate 45 x 54 cm
100 prints (10 a.p.)

SCULPTURE

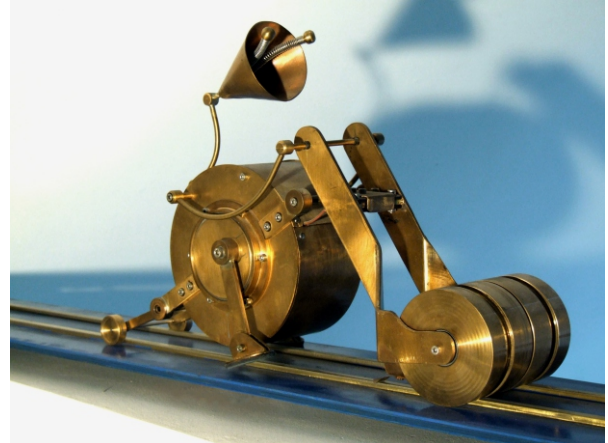


The sculptures are mainly kinetic objects. Only the videos allow a virtual experience of the objects. There are ten of these objects inside the Glass Elephant. All sculptures up to the year 2002 are documented in "Werksverzeichnis Plastik" / Kettler-Verlag.

...himself with Lenin's Comforter



Carterpillar
refined steel and bronze ca. 60 cm, 1992



Special Ambassador or
The Nuntius of the Mechanic Corps
bronze app. 50 cm + track 2000



Lotos Blossom
refined steel, pump, engine and light
closed app. 60 cm
open app. 80 cm height app. 65 cm, 2005t



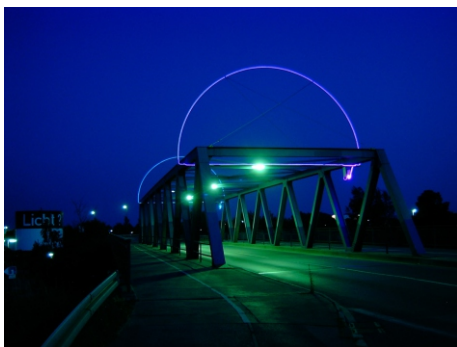
Candidate for Baptism
refined steel electric pump
app. 150/200 cm, 2004

PROJECTS



Competition result of the State parks in North-Rhine-Westphalia 2007

1. Price with the concept "KLANGWALD - SOUNDING FOREST". A loop footpath in the Arnsberg forest with 10 stations. They feature various designs and installations to invite all visitors to operate and experience the objects by all senses beyond the pure design - but also allowing nature – the wind – to interact for the ultimate experience.



„Rainbow Bridge“
Light for the bridges of Hamm
International Competition for ten bridges in Hamm. The Rainbow Bridge was the first to be realized in 2003. Two refined steel arches mark the gates of the bridge. The light moves within glassfiber cables through all colours of the rainbow.

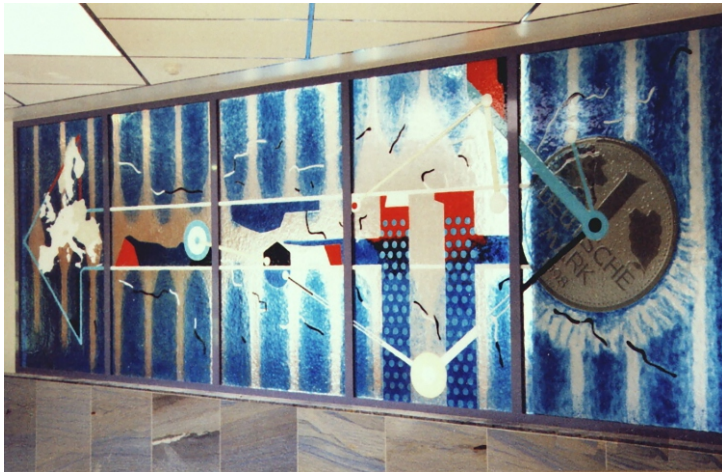


„The Look into the future“
Solar light object for the RAG-School in Bergkamen
refined steel with glassfiber cable and solar modules
height app. 5.00 m
2006

GLASS WINDOWS



„The Erfurt Window“
Fusing glass 1,70 x 24,50 m in 5 pieces, Erfurt / Germany 1996-97



„The Deutsch-Mark on it's way to Europe“
Fusing glass
1,90 x 6,25 m in 5 pieces
Werl / Germany 1998



„Two Geishas“
Fusing glass
2,00 x 1,00 m in 5 pieces
2001



„The swan“
Fusing glass, 200 x 100 cm
1999

The Fusing Technique

The coloured glass (cut, broken pieces or powder) is placed on a window pane and in a special oven melted to one piece. Afterwards this piece may be used like any other window pane even for insulated glass covering.



LASER SHOW



Laser show „Susato“ Soest 2014
History of the city of Soest

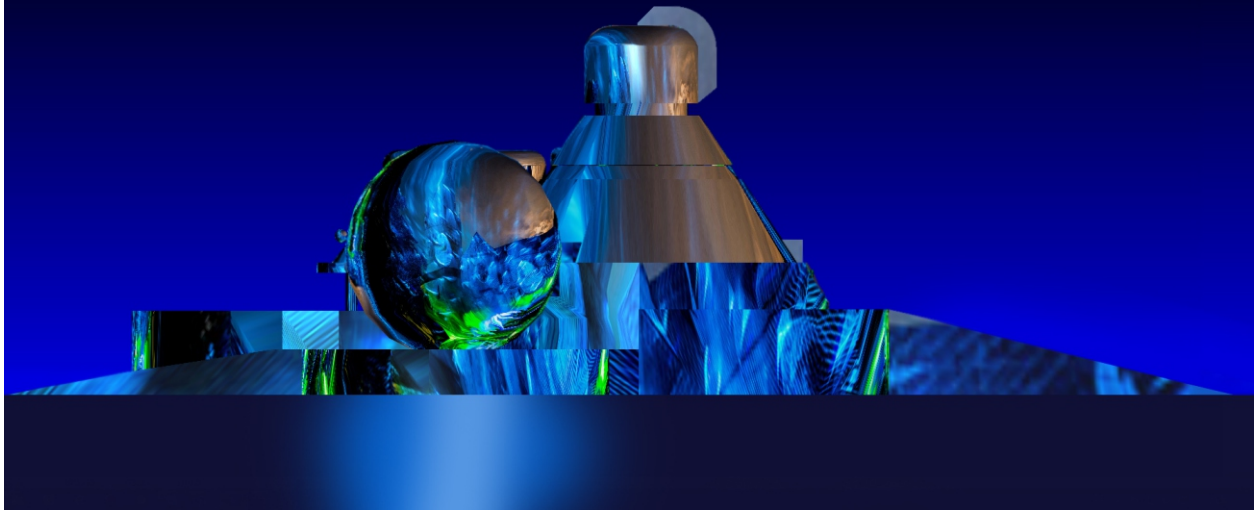
Laser show „HAMMillennium“
Hamm, 2000
Important facts of the last 1000
years
34 days
ca. 50 000 - 60 000 visitors

Laser-Show „Zehnkampf“
As the final celebration of a ten
years work with the 10 kinetic
machines within the glass
elephant
Maxipark Hamm, 1997



Laser show
„Von Altamira bis zum Mars“
Milestones of the human
development
Maxipark Hamm, 1994

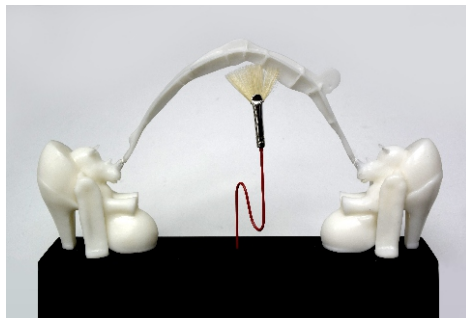
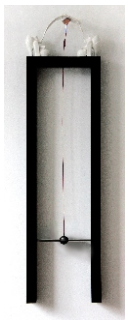




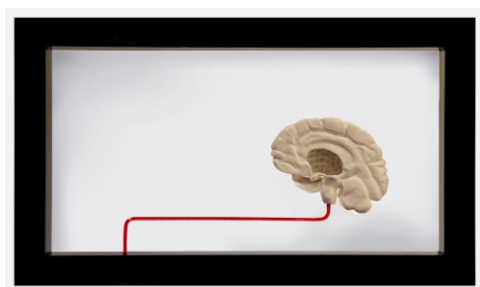
The 3D animation "THE ASTRO PARK" is a 60 minutes journey through a fantasy building with it's various virtual rooms: from space with flying objects to a chess room with kinetic sculptures, the room of painting, which can only be entered by a tube of paintings, the room of printing, the movie theatre, the gallery and some stations outside.



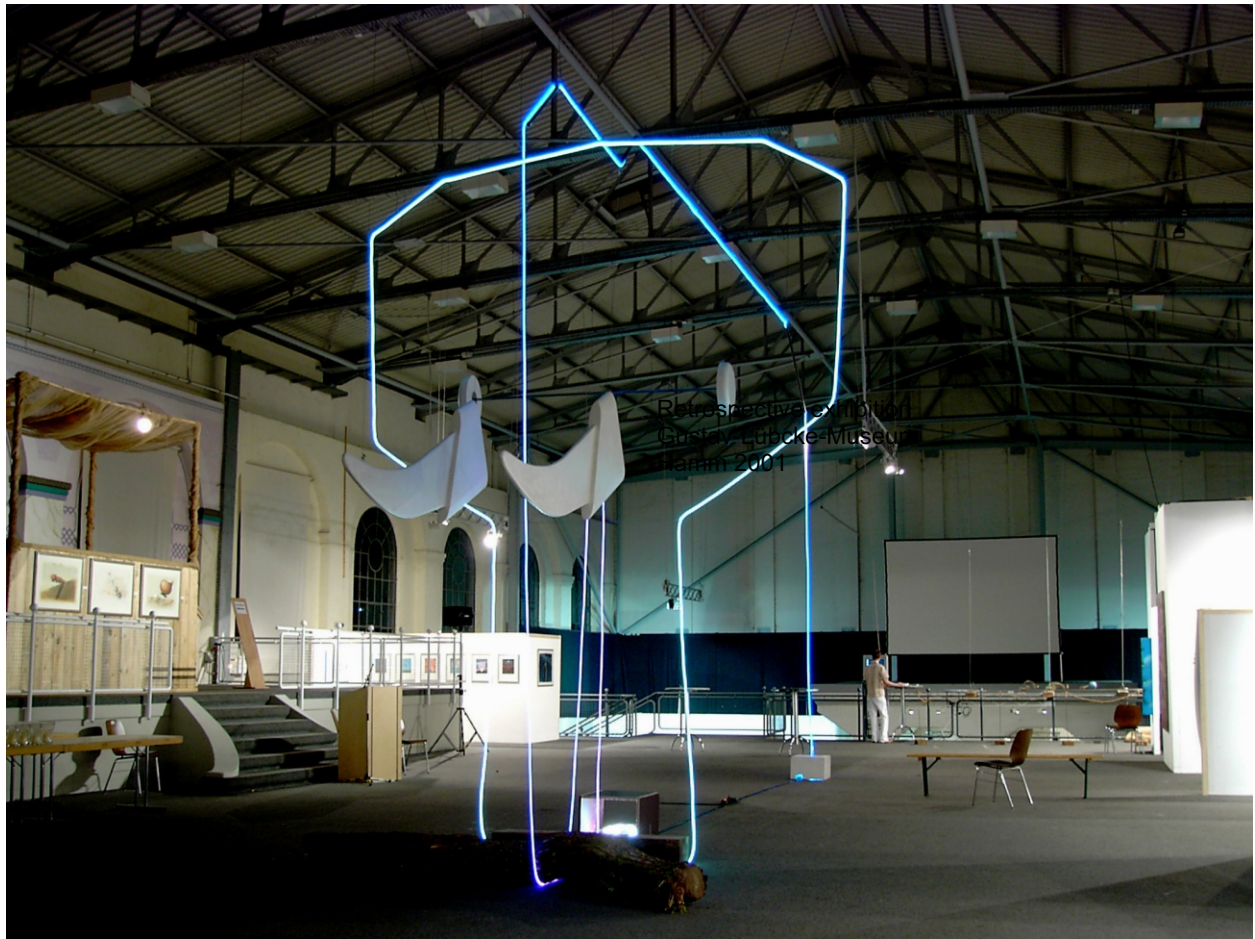
The fantastic opportunities of the computer aided construction not only offers the realistic view in 2D or 3D space, but also the realisation of the physical object by use of a 3D printer. The computer designed 3D drawing is the basis for the picture, the animation or the modell. The objects were offered by the design label



The Belli-Brushing Machine
This device works by an inbuilt mechanism. The two rhino-machos sitting in high heels hold the profiteer.
height ca. 120 x 30 cm, figures 17 cm
black frame
edition of 30 pieces



The heritage of the last inhabitant
The most complex object of the known universe, the human brain, becomes a cave, where the last inhabitant left the counting lines of his days in this prison. The half brain is life sized, app. 18 cm. It may be moved out of the frame and turned around.
Frame 35 x 60 cm
edition of 30 pieces



EXHIBITION
Maximilianpark Hamm
2004



BOOKS



Horst Rellecke
Der rote Punkt
Novel

<http://www.epubli.de/shop/buch>
oder andere e-book-Anbieter wie z.B.
Amazon/Kindle,
Apple oder Google

Horst Rellecke "Der Weg zum Astro-Park"
Manus Presse, Stuttgart 1978

Horst Rellecke "Der Glaselefant"
Pop und Postmoderne
Bauverlag, Wiesbaden und Berlin, 1986

20 Jahre Rellecke
The first 3 catalogues combined

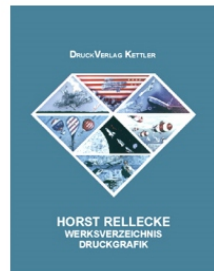
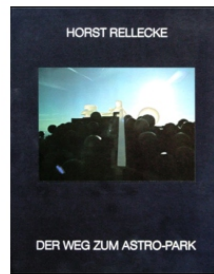
Menschen, Mythen und Maschinen
Gustav-Lübcke-Museum Hamm, 2001

Werksverzeichnis „Druckgrafik“
Kettler-Verlag Bönen, 2001

Werksverzeichnis „Plastik“
Kettler-Verlag Bönen, 2002

„Kurzgeschichten eines aufgeschreckten Clowns“
Kettler-Verlag Bönen, 2002

Glaselefant 25
Maximilianpark Hamm, 2009oder Google



HORST RELLECKE



- 1951 born in Duisburg, Germany
- 1970 high school graduate
- 1972 architecture studies at the University of Stuttgart
first paintings
- 1973 first sculptures from bronze, glass and high-grade steel
- 1975 scholarship of the Aldegrevier Society
the first etchings
- 1977 architecture dissertation (Hans Kammerer)
- 1978 assistant in the Institute for drawing and Modelling University of Stuttgart
- 1979 scholarship of the German Academic Exchange Service (DAAD)
Study in the University of California Los Angeles, (Charles Moore)
- 1980 trips through North America and Central America
- 1981 conception of the 35-m-high glass elephant for the State Garden Fair Hamm
- 1982 doctorate / doctoral thesis: Relations between Pop and architecture
- 1984 completion of the glass elephant
- 1986 first great kinetic sculptures,
- 1987 concept for the interior Glass elephants with a total of 10 kinetic objects (one per year)
- 1988 study trip in Italy
- 1989 1st price competition tax office Zeven sculpture „Tenth“
- 1992 1st price competition State Garden Fair Gelsenkirchen (with Wedig Pridik)
- 1993 1st price competition State Garden Fair Oberhausen (with Lazlo Czinki)
- 1994 concept for the rebuilding the coal mixing building laser show "from Altamira up to Mars"
- 1997 completion of the 10th object for the Glass Glass Elephant
Laser show "Decathlon" in the Maximilianpark
first glass windows
- 1998 rebuilding of the former coal mixing building of the coalmine Osterfeld to the garden cathedral for the State Garden Fair Oberhausen
- 1999 sculpture "Rain with Sunshine - Steel Cloud" in Lake Möhne
- 2000 Laser show "HAMMillennium" city centre Hamm from the 27.11.99 - 1/2/2000
project "Glowlight staging of wind turbines" at Lake Möhne
- 2001 retrospective exhibition in the Gustav Lübcke Museum Hamm
- 2003 light installation "Rainbow Bridge" Hamm

- 2004 jubilee exhibition "20 years" Glass Elephant Maximilianpark Hamm
- 2005 1st prize in the competition "Hamm Vision" with the steel sculpture "Lippe Jumper"
- 2007 1st price with the land competition of the Naturparke in North-Rhine-Westphalia with the project "Sounding Forest"
- 2009 60. Anniversary North-Rhine-Westphalia Light- and sound show at the Glass Elephant
- 2011 Rellecke 60
exhibition in Wilhelm-Morgner-Museum Soest
- 2014 member of the Künstlersonderbund Berlin

EXHIBITIONS

Since 1972 more than 150 single shows at home and abroad

REFERENCES

Horst Rellecke / Günther Wirth "Konzepte"
Manus press, Stuttgart 1978

Günther Wirth "Art in the German Southwest"
Publishing company Gerd Hatje, Stuttgart 1978

Horst Rellecke "Archigraph"
Manus press, Stuttgart 1979

Guinness book of the records
(Issue in 1985 / page 152-153)

Ministry of land and urban development
No. 19, Art in the Construction
1980-85 Dusseldorf 1987

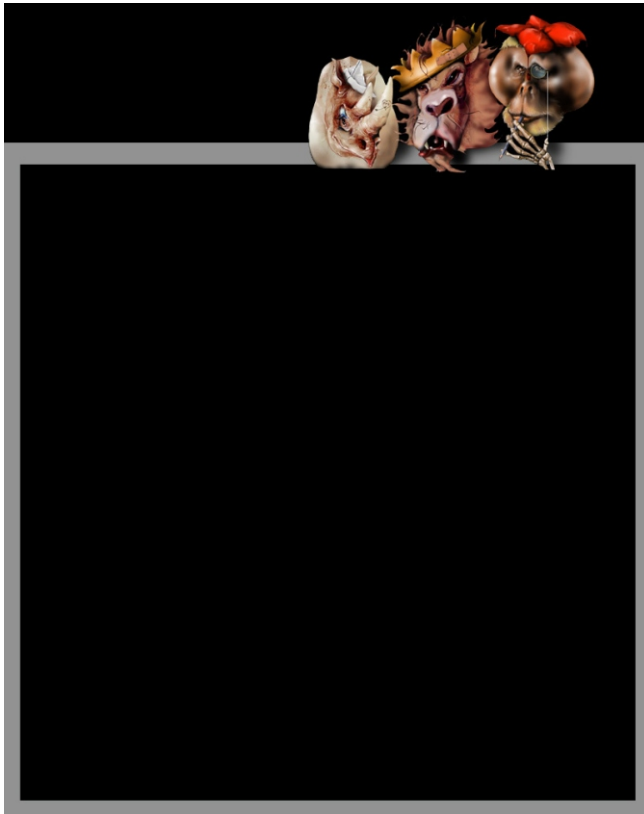
Horst Rellecke
Catalogue Library of Paderborn, in 1988

Brockhaus Encyclopaedia 1992 Volume H, p. 421

Context: Horst Rellecke
Gallery Kley Hamm, 1994

"Wegmarkenprojekt" (Landmarks)
Cultural Region Hellweg Hamm - Soest 2001

Television portrait: Horst Rellecke
Southwest Radio Baden-Baden, 1983



PINWAND IMPRESSUM

IMPRESSUM

Name:	Horst Rellecke
Website:	http://www.horst-rellecke.de
Company:	Dr.Ing. Horst Rellecke
Adress:	Hermann-Kätelhön-Str. 6 59519 Möhnesee
Telephon:	02924-5292
Telefax:	03222 685 682 4
Profession:	Freischaffender Künstler
e-mail:	info@horst-rellecke.de

responsible § 10Absatz 3 MDStV
Dr. Horst Rellecke

Concept and Design
Dr. Horst Rellecke